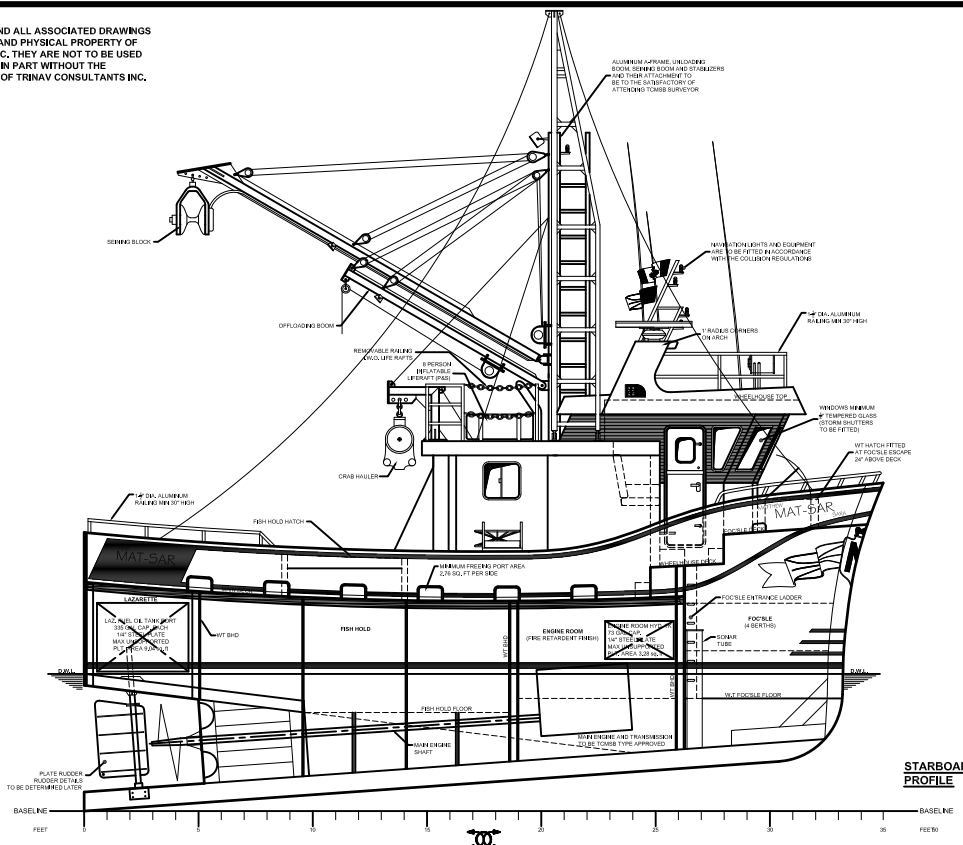


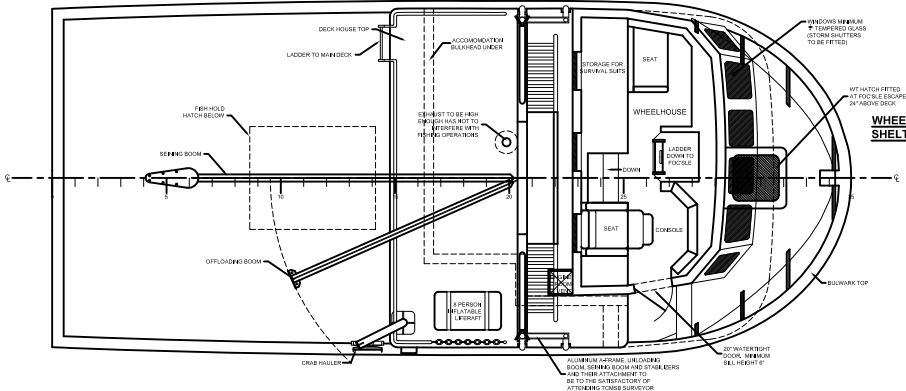
NOTICE:
THIS DESIGN/DRAWING AND ALL ASSOCIATED DRAWINGS
ARE THE INTELLECTUAL AND PHYSICAL PROPERTY OF
TRINAV CONSULTANTS INC. THEY ARE NOT TO BE USED
OR COPIED IN WHOLE OR IN PART WITHOUT THE
EXPRESSED PERMISSION OF TRINAV CONSULTANTS INC.

NOTES:

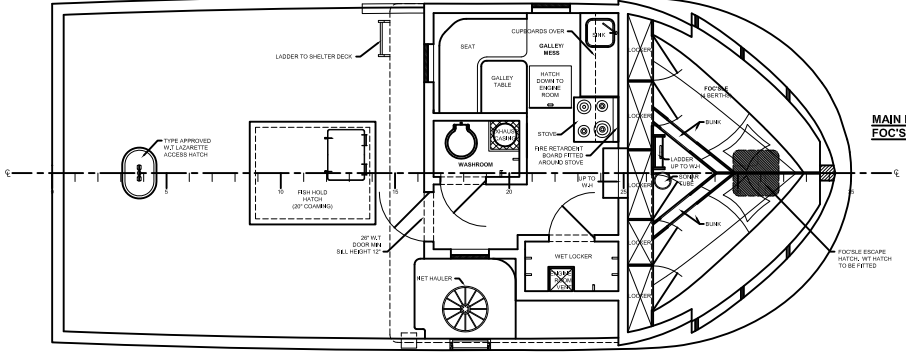
LENGTH overall	34'-11"
BREADTH overall	15'-6"
DEPTH (at 1/2 way to aft) (to deck)	7'-0"
CONSTRUCTION MATERIAL:	GRP COMPOSITE
DRAFT	6'-0"
DRAFT (overall)	3'-0"
RAVE OF KEEL	4" (OVER 34'-11")
DECK CARRIER	2"
MAIN DECK SHEER	10"
FOCUSLE DECK SHEER	0"
FUEL OIL CAPACITY	600 GAL (APPROX)
FRESH WATER CAPACITY	1000 LITERS (APPROX)
GROSS TONNAGE	LESS THAN 100
DESIGN/CONSTRUCTION RULES:	ABS (REINFORCED PLASTIC VESSELS)



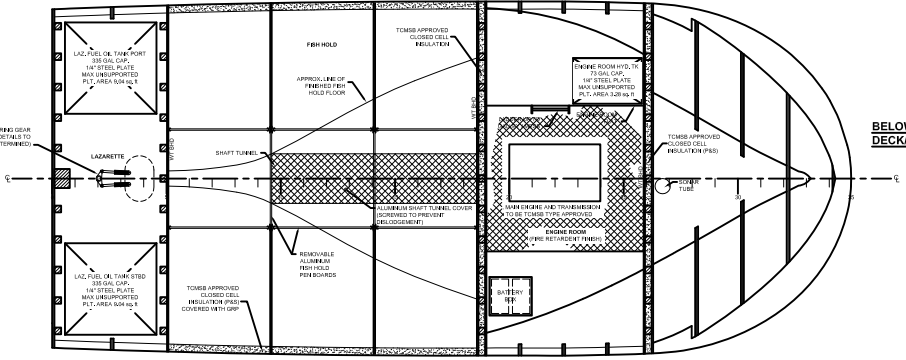
STARBOARD PROFILE



WHEELHOUSE/ SHELTER DECK



MAIN DECK/ FOC'SLE



BELOW MAIN DECK/ FOC'SLE

NO.	REFERENCE DRAWING	TA.	REVISION	ISSUED	DATE
NEW CONSTRUCTION 34'-11" x 15'-6" x 7'-3" GRP FISHING VESSEL GENERAL ARRANGMENT					
PROJECT NO.	002	DRAWN BY	MP	CHECKED BY	CRAND MARCH
DATE	11 JULY 2005	PROJECT NO.	4009A4003	DATE	CRAND MARCH
SCALE	1/4" = 1'-0"	PROJECT	RY	DATE	11 JULY 2005
DESIGNER	TRINAV	CLIENT	JACKSONS BOATYARD	PROJECT NO.	000